



# The 14th East Asian Social Policy Research Network Annual Conference

East Asian Social Policy in a Changing Environment:  
Comparisons, Visions and Futures



2-3 August 2017 at Toyoda Auditorium, Nagoya University, Japan

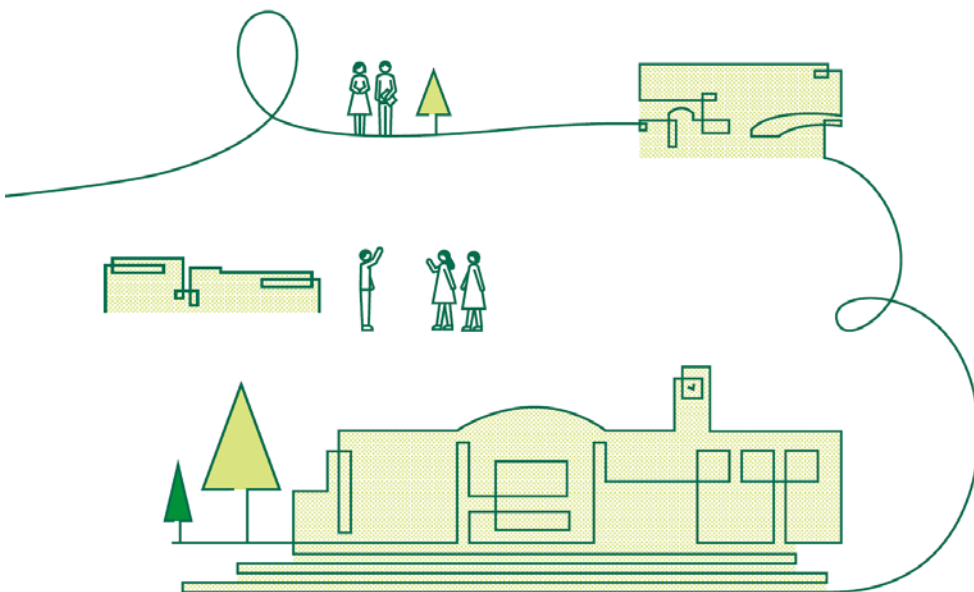
co-hosted by Graduate School of Environmental Studies, Nagoya University  
sponsored by The Tokyo Club and Nagoya University



## Table of Contents

Introduction.....	2
Programme Schedule.....	6
Plenary Sessions.....	26
Abstracts.....	32
Paper Session 1.....	33
Paper Session 2.....	47
Paper Session 3.....	63
Paper Session 4.....	79
Paper Session 5.....	92
Practical Information.....	108
How to Get to the Hotel and the Venue.....	109
Access Map from the Airport to the Hotel and the Venue.....	110
Access Map from Chikusa Station to Hotel Leoplace Nagoya.....	110
Campus Map with the List of Recommended Restaurants.....	111
Floor Map of Toyoda Auditorium.....	112
List of Participants.....	114

# Introduction



## The Conference Theme

### East Asian Social Policy in a Changing Environment: Comparisons, Visions and Futures

Social policy in East Asia is developed and reformed in an increasingly challenging environment. The 'environment' here is not confined to natural environments but includes the social, economic, political and demographic contexts. This conference will examine social policy issues in the wider structural challenges and consider visions for the future in the region. We encourage both theoretical and empirical papers. Comparative perspectives relating to social policy issues within and across the regions are particularly welcome. We also invite papers by postgraduate students and early-career researchers as well as established scholars working in the fields of social policy on East Asia.

### About the EASP

The East Asian Social Policy (EASP) Research Network is a regional association for academics, researchers, students and practitioners of social policy in East Asia and beyond.

The EASP was established in January 2005 to facilitate research exchange and co-operation among social policy analysts and to provide a forum and network of communication for the development of social policy as a discipline in East Asia. The Network welcomes comparative and multi-disciplinary approaches to the analysis of social policy in East Asia.

The specific objectives include:

- Hosting annual conferences on selected themes
- Promoting activities related to social policy in East Asia
- Enhancing the quality of research of social policy in East Asia
- Developing theories and knowledge of social policy from an East Asian perspective
- Promoting comparative social policy within East Asia and between East Asia and other regions in the world
- Supporting the development of knowledge, skills and experiences of doctoral students and early career researchers in the region
- Promoting social policy in teaching and learning; and
- Advancing the role of research in policy making, practice and wider public debates

The EASP is an outward-facing association and seeks to develop links with other relevant national and regional associations on related disciplines in East Asia and beyond.

## The EASP Committee

### Chair

Dr. Misa Izuhara (University of Bristol) m.Izuhara@bristol.ac.uk

### Secretary

Dr. Jack Chan (Sun Yat-sen University) chanwingkit@gmail.com

### Committee Members

Prof. Ka-Ho Mok (Lingnan University) kahomok@ln.edu.hk

Prof. M Ramesh (National University of Singapore) mramesh@nus.edu.sg

Prof. Koichi Hiraoka (Ochanomizu University) hiraoka.koichi@ocha.ac.jp

Prof. Kinglun Ngok (Sun Yat-sen University) klngok@126.com

Prof. Kyo-Seoung Kim (Chung-Ang University) kyoseong@cau.ac.kr

Dr. Bo Yung Kim (Yeungnam University) boyung@boyung.net

Dr. Bum Jung Kim (University of Hawaii at Manoa) bjk2001@hawaii.edu

Dr. Yuko Tamiya (Kobe Gakuin University) tamiya@eb.kobegakuin.ac.jp

Dr. Yasuhiro Kamimura (Nagoya University) kamimura@lit.nagoya-u.ac.jp

Dr. Peiyuen Tsai (National Chengchi University) pytsai@nccu.edu.tw

Dr. He Jingwei Alex (Hong Kong Institute of Education) jwhe@ied.edu.hk

Dr. Stefan Kuhner (Lingnan University) stefankuehner@ln.edu.hk

Dr. Ijin Hong (Ewha Womans University) ijindottorato@daum.net

Homepage: <http://welfareasia.org>

Contact: Dr. Jack Chan, Secretary (chanwingkit@gmail.com)

## The Local Organising Committee of the 14th EASP

Dr. Yasuhiro Kamimura (Nagoya University) kamimura@lit.nagoya-u.ac.jp

Prof. Koichi Hiraoka (Ochanomizu University) hiraoka.koichi@ocha.ac.jp

Dr. Yuko Tamiya (Kobe Gakuin University) tamiya@eb.kobegakuin.ac.jp

## Organizing Team Members

Natsuki Furuta, Yusuke Hotta, Qing Lan, Kaho Maeda, Megumi Sasada, Naho Sugita,

Yosuke Takeuchi, Yuya Takeuchi, Junghoon Woo, Fumihiko Yamada, Fangzhou Zhai

## About Nagoya University

Nagoya University has a 146-year history. It was established in 1871 as the Temporary Medical School and Public Hospital, according to the proposal by *Ryuan Ishii*, *Sanpaku Nakajima*, and *Keisuke Ito*, who were the pioneers of smallpox vaccination in Nagoya. It became Nagoya Imperial University as the youngest of the seven (nine at the time) imperial universities in 1939, comprising the departments of medicine, science and engineering. It subsequently became Nagoya University under the new education system in 1949, adding the departments of humanities and social sciences. Today, 16,000 students, including 2,200 overseas students, study at Nagoya University. We are proud of its liberal and vibrant atmosphere and its numerous academic achievements, including those of six Nobel laureates.

## About Toyoda Auditorium

Toyoda Auditorium was donated by the Toyota Motor Corporation in 1960 in commemoration of *Sakichi Toyoda*, the father of the founder. It was designed as the first work by *Fumihiko Maki*, one of the most famous modernist architects in Japan, who was a 33-year-old associate professor of Washington University at the time. He was awarded the Prize of Architectural Institute of Japan for this work. He has been the recipient of many of the profession's highest accolades, including the Pritzker Prize in 1993. Toyoda Auditorium was designated by the government as a registered tangible cultural property in 2011. The clock is illuminated with blue LED at night in celebration of Professor *Isamu Akasaki*, the inventor of blue LED.

## About the Tokyo Club

The Tokyo Club was established by Foreign Minister *Kaoru Inoue* and others in 1884, being modeled after British gentlemen's clubs. It is said that Emperor *Meiji* suggested forming the club. The club is committed to fostering international exchange. Prince *Masahito Hitachi*, the younger brother of Emperor, is the current honorary president.

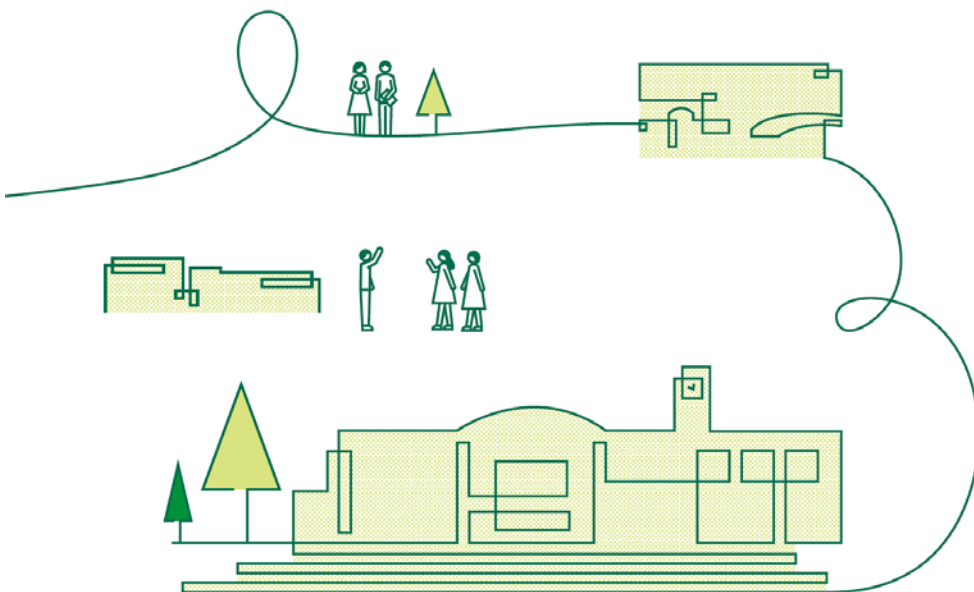
## About the Nohgaku Performer



**Kazufusa Hosho**

Born in Tokyo in 1986. Studied under his father, *Fusateru Hosho*, the 19th head of the Hosho school. Hosho school is one of five schools of *Nohgaku*, and its origins lie in the 14th century. He has also been under the tutelage of *Hajime Sano*, *Yasuo Imai*, and *Izumi Mikawa*. In 1991, he debuted as a child actor in *Seiobo* (The Queen Mother of the West). In 2008, he succeeded the Hosho school as the 20th head. He has performed *Sagi* (Heron), *Midare* (The Disorderly Tipster Sprite), *Ishibashi* (Stone Bridge), *Dojoji* (Dojoji Temple), *Ataka*, *Okina* (The Old Man), and a special version of *Yoroboshi* (The Beggar and His Savior). He is active in performances across different genres, the revival of old plays, as well as traditional performances. He has also performed overseas, such as in Italy and Hong Kong.

# Programme Schedule



## Programme Schedule

<b>Date</b>	<b>Time</b>	<b>Schedule</b>	<b>Venue</b>
<b>Day 1</b> <b>2<sup>nd</sup> August</b>	09:30-10:00	<b>Registration</b>	Foyer
	10:00-11:30	<b>Welcome &amp; Plenary Session 1</b>	Main Hall
	11:30-13:00	<b>Paper Session 1</b>	Symposion, Universal Club, Room1,3,4,5
	13:00-14:00	<b>Lunch</b>	Atrium and Universal Club
		<b>EASP Executive Committee Meeting</b>	Universal Club (Dining Room)
	14:00-15:30	<b>Paper Session 2</b>	Symposion, Universal Club, Room1,3,4,5
	15:30-16:00	<b>Coffee Break</b>	Atrium
	16:00-17:30	<b>Paper Session 3</b>	Symposion, Universal Club, Room1,3,4,5
	18:00-18:15	<b>Nohgaku Performance</b>	Main Hall
	18:30-20:00	<b>Dinner</b>	Atrium
<b>Day 2</b> <b>3<sup>rd</sup> August</b>	09:00-10:30	<b>Paper Session 4</b>	Symposion, Room1,3,4,5
	10:30-11:00	<b>Coffee Break</b>	Atrium
	11:00-12:30	<b>Paper Session 5</b>	Symposion, Universal Club, Room1,3,4,5
	12:30-13:30	<b>Lunch</b>	Atrium and Universal Club
	13:30-15:00	<b>Plenary Session 2 &amp; Closing</b>	Main Hall



## Plenary Sessions

### 1. Welcome & Plenary Session 1 (Day 1)

Wednesday 2 August 10:00-11:30		Venue
<b>Welcome</b>		Main Hall
<b>Yasuhiro Kamimura</b> (Conference Organiser, Nagoya University) Welcoming Address: <b>Professor Koichi Hiraoka</b> (Former President of Japan Association for Social Policy Studies, Ochanomizu University)		
<b>Plenary Session 1</b>		
<b>Chair: Yasuhiro Kamimura (Nagoya University, Japan)</b>		
<b>Professor Shih-Jiun Shi</b> (National Taiwan University, Taiwan)	Welfare Retrenchment in East Asia: Pension Reforms in Comparative Perspective	
<b>Professor Emiko Ochiai</b> (Kyoto University, Japan)	Changing Care Diamonds in Europe and Asia: Asianization of Europe and Europeanization of Asia?	

### 2. Plenary Session 2 & Closing (Day 2)

Thursday 3 August 13:30-15:00		Venue
<b>Plenary Session 2</b>		Main Hall
<b>Chair: Misa Izuhara (University of Bristol, UK)</b>		
<b>Dr. Sarah Cook</b> (UNICEF Office of Research-Innocenti)	The Sustainable Development Goals and Children: How Well Do East Asian Social Policies Fare in Achieving Global Goals?	
<b>Professor Yoshinori Hiroi</b> (Kyoto University, Japan)	Possibility of Sustainable Welfare Societies: Integration of Social Policy and Environmental Policy in the Post-growth Society	
<b>Followed by Closing Remarks</b>		
Closing Remarks: <b>Misa Izuhara</b> (the Chair of the East Asian Social Policy Research Network) and <b>Jack Chan</b> (the Secretary of the East Asian Social Policy Research Network)		

## General Sessions

Date	Paper Session	A (Symposion)	B (Room 1)	C (Room 3)	D (Room 4)	E (Room 5)	F (Universal Club)
<b>Day 1</b> <b>2 August</b>	<b>1</b>	1.1 Welfare State and Welfare Regimes	2.1 Governance, Democracy and Participation	3.1 Migration, Citizenship and Diversity	4.1 Family and Care	5.1 Health and Well-being	9.1 Labour Market and Inequality
	<b>2</b>	6.1 Poverty and Social Exclusion	2.2 Governance, Democracy and Participation	3.2 Migration, Citizenship and Diversity	4.2 Family and Care	12 Diversity	9.2 Labour Market and Inequality
	<b>3</b>	1.2 Welfare State and Welfare Regimes	6.2 Poverty and Social Exclusion	3.3 Migration, Citizenship and Diversity	4.3 Family and Care	7.1 Education	9.3 Labour Market and Inequality
<b>Day 2</b> <b>3 August</b>	<b>4</b>	6.3 Poverty and Social Exclusion	11.1 Social Protection	8.1 Ageing and the Life Course	5.2 Health and Well-being	7.2 Education	
	<b>5</b>	1.3 Welfare State and Welfare Regimes	11.2 Social Protection	8.2 Ageing and the Life Course	5.3 Health and Well-being	7.3 Education	9.4 Labour Market and Inequality

**Day 1 (2 August 2017) Paper Session 1 (11:30-13:00)**

<b>Paper Session 1: 11:30-13:00</b>		
<b>Session</b>	<b>Presentation</b>	<b>Venue</b>
<b>Session 1A</b>	<b>Stream 1.1 Welfare States and Welfare Regimes</b> <b>Chair: Ka Ho Mok (Lingnan university, Hong Kong)</b>	
	• New Globalization by Trade and Investment Treaties: Implications for Welfare Policy and Politics in East Asia	Young Jun Choi (Yonsei University, South Korea)
	• Patterns of Welfare in the People’s Republic of China (PRC)	Mel Cousins (Trinity College Dublin, Ireland)
	• From an Anomaly to a Prototype?: Japan’s Welfare Regime in East Asia	Takeshi Hieda (Osaka City University, Japan)
	• Determinants of Non-Managerial Women’s Ambition for Promotion	Tomo Nishimura (Kwansei Gakuin University, Japan)
<b>Session 1B</b>	<b>Stream 2.1 Governance, Democracy and Participation</b> <b>Chair: Alex Jingwei He (The Education University of Hong Kong, Hong Kong)</b>	
	• What Money Can Buy: Illusion of Future Economy	Byeonghwa Choi (National Taiwan University, Taiwan) and Yesola Kweon (Indiana University, USA)
	• Governance, Participation and Diverse Impact of Neoliberalisation: Changes in Community Development Services in an Asian Productivist Welfare Regime of Hong Kong	Kwok-kin Fung and Suet-lin Hung (Hong Kong Baptist University, Hong Kong)
	• Moving Beyond Empty Slogans?: Understanding the Challenges of Migrant Pension Policy Implementation in China	Yu Guo (Renmin University of China, China) and Johnson Karl (Northern Michigan University, USA)
	• Why the PPP/PFI is Not Widely Utilized in the Social Welfare Area in Japan	Mai Shi (Doshisha University, Japan)

<b>Paper Session 1: 11:30-13:00</b>		
<b>Session</b>	<b>Presentation</b>	<b>Venue</b>
<b>Session 1C</b>	<b>Stream 3.1 Migration, Citizenship and Diversity</b> <b>Chair: Bo-Yung Kim (Yeungnam University, South Korea)</b>	
	• Care Crisis in East Asia: Migrant, Domestic Care Workers in Korea as Part of the Solution, or Adding to the Problem?	Peter Abrahamson (University of Copenhagen, Denmark)
	• Recent Politics of Homosexuality and AIDS in South Korea: The Conflicts among the State, MSMs, and Christian Groups around Human Rights or 'Pro-homosexuality' Policies	Aeree Sohn (Sahmyook University, South Korea) and Byong-Hee Cho (Seoul National University, South Korea)
	• Xiaojies' Eating the Rice Bowl of Youth: Everyday Self-practices as Invisible Transgression and a New Possibility in Doing Citizenship from the Margin	Yu Ding (Sun Yat-sen University, China)
	• Immigration Policy and Social Stratification: The Japanese Case	Bruno Naomassa Hayashi (Nagoya University, Japan)
<b>Session 1D</b>	<b>Stream 4.1 Family and Care</b> <b>Chair: Peiyuen Tsai (National Chengchi University, Taiwan)</b>	
	• Organisational Supervision or Intrusion to Achieve Quality Foster Care in China?	Karen Fisher and Xiaoyuan Shang (University of New South Wales, Australia)
	• The Impact of Grandparents on Child Well-being in Shanghai, China	Wen-Jui Han and Tazuko Shibusawa (New York University, USA)
	• Men as Carers: The Changing Perceptions of People in Hong Kong	Lai Ching Leung (City University of Hong Kong, Hong Kong)
	• Adult Never-married Single Mothers in Taiwan: The Multiple Challenges of Becoming a Mother and Coping Strategies	Hung-ju Lai (University of Bath, UK)
		Room 3
		Room 4

<b>Paper Session 1: 11:30-13:00</b>		
<b>Session</b>	<b>Presentation</b>	<b>Venue</b>
<b>Session 1E</b>	<b>Stream 5.1 Health and Well-being</b> <b>Chair: Stefan Kühner (Lingnan University, Hong Kong)</b>	
	• Promoting Well-being through Social Services: Hong Kong NGOs' Experiences in China	Ka Ho Mok (Lingnan University, Hong Kong)
	• Happiness of Young People in Hong Kong: The Role of Labour Market Experience	Jin Jiang (Lingnan University, Hong Kong)
	• Inequality and Youth Happiness in a Rich Society: The Case of Hong Kong	Stefan Kühner (Lingnan University, Hong Kong)
	• Reorientation or Reinforcement: A Critical Discourse Analysis of Childcare Policies in Taiwan	Yu-Chen Chang (University of Warwick, UK)
		Room 5
<b>Session 1F</b>	<b>Stream 9.1 Labour Markets and Inequality</b> <b>Chair: Ijin Hong (Yonsei University, South Korea)</b>	
	• The Study about Substitute Personnel during Maternity Leaves and Childcare Leaves	Chisato Atobe (Shizuoka University, Japan)
	• Organised Labour, Dualisation and Labour Market Reform: Korean Trade Union Strategies in Economic and Social Crisis	Timo Fleckenstein (London School of Economics, UK) and Soohyun Lee (University of Leeds, UK)
	• Dealing with Labor Unrest in New Round of Laid-off Varieties of Regional Labor Market Policies under China's Industrial De-capacity Reform	Jingyang Huang (Hong Kong University of Science and Technology, Hong Kong)
	• Social Insurance of the Independent Contractors in South Korea: What Affects Their Coverage?	Hyojin Seo (Ewha Womans University, South Korea)
		Universal Club

**Day 1 (2 August 2017) Paper Session 2 (14:00-15:30)**

<b>Paper Session 2: 14:00-15:30</b>			
<b>Session</b>	<b>Presentation</b>		<b>Venue</b>
<b>Session 2A</b>	<b>Stream 6.1 Poverty and Social Exclusion</b> <b>Chair: Stefan Kühner (Lingnan University, Hong Kong)</b>		Symposium
	• Construction of Child Material Deprivation Index for Japan	Aya Abe (Tokyo Metropolitan University, Japan)	
	• A Comparison of Measuring Poverty Line	Jin Young Moon (Sogang University, South Korea)	
	• Impact of Head Start Quality on Low Income Children in US	Kyunghee Lee (Michigan State University, USA)	
	• Poverty: Prevent or Cure? - An Integrated Framework for Poverty Prevention Focusing on Optimal Brain Development in Childhood	Gaspar Fajth and Daphne Francois (UNICEF East Asia and Pacific Regional Office, Bangkok, Thailand)	
<b>Session 2B</b>	<b>Stream 2.2 Governance, Democracy and Participation</b> <b>Chair: Young Jun Choi (Yonsei University, South Korea)</b>		Room 1
	• Public Welfare Attitudes towards Redistribution: A Comparison of Three East Asian Societies	Kun Yang (The Chinese University of Hong Kong, Hong Kong)	
	• Comparison of Regimes of Governance of Migrant Domestic Workers in Japan, Taiwan and Singapore	Kunlu Wu (Ming Chuan University, Taiwan) and I-Chun Kung (National Chi-Nan University, Taiwan)	
	• Asian Financial Crisis and Health Policy Reform in Korea and Thailand: A Case Comparison Using the Advocacy Coalitions Framework	Aungsumalee Pholpark (Yonsei University, South Korea)	
	• Family Capital and the Quality of Primary School that Children Enrolled In: A Case Study in Eastern China	Xiaochen Zhou (University of Hong Kong & King's College London, UK)	

<b>Paper Session 2: 14:00-15:30</b>		
<b>Session</b>	<b>Presentation</b>	<b>Venue</b>
<b>Session 2C</b>	<b>Stream 3.2 Migration, Citizenship and Diversity</b> <b>Chair: Peter Abrahamson (University of Copenhagen, Denmark)</b>	
	<ul style="list-style-type: none"> <li>• Speak Our National Language: The Determinators for Hiring Immigrants among Employers in Taiwan</li> </ul>	Yun-Hsiang Hsu (National Central University, Taiwan), Chih-Yu Chen (National Chengchi University, Taiwan), and Kuo-Jung Lin (Chihlee Institute of Technology, Taiwan)
	<ul style="list-style-type: none"> <li>• The Impact of Social Policy and Global Migration on Intimate Family Life among African-Chinese Families Living in Guangzhou</li> </ul>	Lucy Jordan (University of Hong Kong, Hong Kong)
	<ul style="list-style-type: none"> <li>• Welfare Regimes, Immigration Regimes and Immigrants' Social Citizenship: A Fuzzy Set Ideal Type Analysis of 27 OECD Countries</li> </ul>	Kyunghwan Kim (University of York, UK)
	<ul style="list-style-type: none"> <li>• Migrant Workers and Social Exclusion in East Asia</li> </ul>	Mason Kim (Spelman College, USA)
<b>Session 2D</b>	<b>Stream 4.2 Family and Care</b> <b>Chair: Koichi Hiraoka (Ochanomizu University, Japan)</b>	
	<ul style="list-style-type: none"> <li>• Support Policies for the Family Caregivers of the Elderly in Urban China: Problems and Issues</li> </ul>	Chenxi Huang (East China Normal University, China)
	<ul style="list-style-type: none"> <li>• A Comparative Study of the Impact of Gender Politics on the Socialisation of Care: South Korea and Japan</li> </ul>	Sung-Hee Lee (University of Derby, UK)
	<ul style="list-style-type: none"> <li>• Policy Discourse of Childcare: Work and Care of Lone Mothers in Hong Kong</li> </ul>	Hung Suet Lin and Fung Kwok Kin (Hong Kong Baptist University, Hong Kong)
		Room 3
		Room 4

Paper Session 2: 14:00-15:30		
Session	Presentation	Venue
Session 2E	<b>Stream 12 Diversity</b> <b>Chair: Yujun Liu (The University of Hong Kong, Hong Kong)</b>	
	• Mermaid's Choice: Female Immigrants' Experience Who Suffered from Domestic Violence in Taiwan	Fen-ling Chen (National Taipei University, Taiwan)
	• On the Studies of Down Syndrome in Super-aged Society: Towards the Integrated Community Care System for Cohesive Society/Family	Narumi Motegi (Kyoto University, Japan)
	• An Analysis on the Sentencing of Child and Youth Sexual Crime in Korea: Using Qualitative Comparative Analysis (QCA)	Won-Hee Cho and Chang-Keun Han (SungKyunKwan University, South Korea)
	• How Can We Work with People with Intellectual Disabilities?: Comparative Research on Three Facilities Originating from Various Disability Movements	Ayaka Ito (Aichi University of Education, Japan)
Session 2F	<b>Stream 9.2 Labour Markets and Inequality</b> <b>Chair: Peiyuen Tsai (National Chengchi University, Taiwan)</b>	
	• The Dual Labour Market and the Income Maintenance in Old Age in OECD Countries	Yun-Young Kim (Ewha Womans University, South Korea)
	• The Relation between Self-competence to Work and Activation Measures: A Research of Low-income Workers in Taiwan	Hung-Yang Lin (National Pingtung University of Science and Technology, Taiwan), Pei-Yuen Tsai (National Chengchi University, Taiwan), and Yeun-Wen Ku (National Taiwan University, Taiwan)
	• An Empirical Analysis of Substitution and Complementarity of Men and Women Employment in Japan, South Korea and China's Enterprises: Factor Analysis of the Gender Wage Differentials- What is the Economic Policy for Labor Market Reform in Japan?	Hiromi Ishizuka (Sanno University, Japan)
	• Do Women Benefit from Higher Education?: A Study of Female Workers in the Labour Market of Urban China	Jin Jiang (Lingnan University, Hong Kong) and Jiwei Qian (National University of Singapore, Singapore)



**Day 1 (2 August 2017) Paper Session 3 (16:00-17:30)**

<b>Paper Session 3: 16:00-17:30</b>			
<b>Session</b>	<b>Presentation</b>		<b>Venue</b>
<b>Session 3A</b>	<b>Stream 1.2 Welfare States and Welfare Regimes</b> <b>Chair: Gyu-Jin Hwang (University of Sydney, Australia)</b>		Symposium
	• An Analysis of East Asian Welfare Politics from the Perspective of Varieties of Capitalism Approach	Makoto Inoue (Nihon Fukushi University, Japan)	
	• South Korea Still at the Crossroads? Dynamics in Transformation from Productive Welfare Regime to a Welfare State Regime	Bo-Yung Kim (Yeungnam University, South Korea)	
	• Dynamics of Income Security and Social Services in Welfare Regimes	Jin Young Moon (Sogang University, South Korea) and Yun Young Kim (In-Cheon Development Institute, South Korea)	
	• Neither the Market nor the State: Reconfiguring Urban Welfare Regimes through Public Service Initiatives in Post-Socialist China	Shanni Zhao (Harvard University, USA)	
<b>Session 3B</b>	<b>Stream 6.2 Poverty and Social Exclusion</b> <b>Chair: Karen Fisher (The University of New South Wales, Australia)</b>		Room 1
	• The Role of Housing in Sustainable Youth Transitions: Japan-UK Compared	Misa Izuhara (University of Bristol, UK)	
	• Future Ways of Living, Implications for Social Policy and Changing Housing Arrangements: Comparison between UK and Asian Trends in Multigenerational Living	Gemma Burgess and Michael Jones (University of Cambridge, UK)	
	• New Intergenerational Contracts in the Making?: The Experience of Urban China	Xiaohui Zhong (Sun Yat-sen University, China) and Bingqin Li (University of New South Wales, Australia)	
	• A Study on the Housing Policy for the Risk of the Lifetime in Japan	Yoshihiro Okamoto (Chukyo University, Japan)	

<b>Paper Session 3: 16:00-17:30</b>		
<b>Session</b>	<b>Presentation</b>	<b>Venue</b>
<b>Session 3C</b>	<b>Stream 3.3 Migration, Citizenship and Diversity</b> <b>Chair: Mason Kim (Spelman College, USA)</b>	
	• The Road to Exclusion: The Case of Muslim Multicultural Families in South Korea	YoonKyung Kwak (University of Bristol, UK)
	• Ethnic Return Migration of the Second-Generation Hong Kong Chinese Immigrants: Motives, Re-Acculturation and Re-Adaptation	Jia Li (The University of Hong Kong, Hong Kong)
	• The Role of Identity Capital in Shaping Chinese Migrants' Mental Health Status	Xuan Wu (The Chinese University of Hong Kong, Hong Kong) and Wing-kit Chan (Sun Yat-sen University, China)
	• Social Support for Elderly Parents of Developmentally and Mentally Disabled Adult Children in Shanghai: A Comparative Perspective	Lin Chen and Yangdi Han (Fudan University, China)
<b>Session 3D</b>	<b>Stream 4.3 Family and Care</b> <b>Chair: Sung-Hee Lee (University of Derby, UK)</b>	
	• The Politics of Work Family Policies in Japan	Chiaki Iwasaki (Nagoya University, Japan)
	• Flexibility Measures of Parental Leave in Taiwan	Pei-Yuen Tsai (National Chengchi University, Taiwan)
	• China's Long-term Care Service Expansion with Inadequate Service Utilization since Mid-1980s: The Case of Institutional Care for the Elderly	Xuan Wan (The Chinese University of Hong Kong, Hong Kong)
	• Reconciling Work and Double Responsibility of Care	Junko Yamashita (University of Bristol, UK) and Naoko Soma (Yokohama National University, Japan)

**Paper Session 3: 16:00-17:30**

Session	Presentation		Venue
<b>Session 3E</b>	<b>Stream 7.1 Education</b> <b>Chair: Ka Ho Mok (Lingnan University, Hong Kong)</b>		Room 5
	<ul style="list-style-type: none"> <li>Impacts of World Class Universities Policies in China: Review and Reflections</li> </ul>	Jack Chan and Kinglun Ngok (Sun Yat-sen University, China)	
	<ul style="list-style-type: none"> <li>Mindfulness and Academic Performance: Evidence from Migrant Children in China</li> </ul>	Shuang Lu, Chien-Chung Huang and Juan Rios (Rutgers University, USA)	
	<ul style="list-style-type: none"> <li>School Drop-out Policy in South Korea: The Need for an Early-intervention System</li> </ul>	Dong Ha Kim (Chungwoon University, South Korea)	
	<ul style="list-style-type: none"> <li>Ecological-Systemic Factors for Internet Using Types among South Korean Youth</li> </ul>	Jun Hyeok Kang and Gyeseung Lee (Sungkyunkwan University, South Korea)	
<b>Session 3F</b>	<b>Stream 9.3 Labour Markets and Inequality</b> <b>Chair: Yuko Tamiya (Kobe Gakuin University, Japan)</b>		Universal Club
	<ul style="list-style-type: none"> <li>The Effect of Labor Unions on the Duality of Labor Market</li> </ul>	Kyoko Suzuki (The University of Tokyo, Japan)	
	<ul style="list-style-type: none"> <li>An East Asian Active Labour Market Policy Regime?</li> </ul>	Chung-Yang Yeh (Academia Sinica, Taiwan), Hong-Yong Lim (National Ping-Tung University of Science and Technology, Taiwan), and Yuen-wen Ku (National Taiwan University, Taiwan)	
	<ul style="list-style-type: none"> <li>Converting Eligibility into Participation: How Income Insecurity Drives Social Policy Demand in Indonesia</li> </ul>	Wei-Ting Yen (The Ohio State University, USA)	
	<ul style="list-style-type: none"> <li>Social Investment and Gender Attitudes: A Multilevel Analysis Investigating the Role of Family and Labour Market Policies across 16 Industrialised Countries</li> </ul>	Ji Young Kang (University of Washington, USA), Ijin Hong (Yonsei University, South Korea), and Jieun Lee (University of York, UK)	

## Day 2 (3 August 2017) Paper Session 4 (9:00-10:30)

Paper Session 4: 9:00-10:30			
Session	Presentation		Venue
Session 4A	<b>Stream 6.3 Poverty and Social Exclusion</b> <b>Chair: Aya Abe (Tokyo Metropolitan University, Japan)</b>		Symposium
	• Towards a Better Understanding of Child Poverty and Deprivation: Evidence for Australia	Peter Saunders (University of New South Wales, Australia)	
	• A Comparative Study on Poverty Dynamics in Taiwan and Southeast China	Julia Shu-Huah Wang (The University of Hong Kong, Hong Kong) and Yixia Cai (Columbia University, USA)	
	• Mental Illness and Household Poverty Dynamics: What Happened during China's Rapid Social Development?	Yuehui Yu and Maosheng Ran (The University of Hong Kong, Hong Kong)	
	• Comparative Study of Reform Processes of Minimum Income Protection in Korea and Japan	Atsushi Yuyama (Seoul National University, South Korea)	
Session 4B	<b>Stream 11.1 Social Protection</b> <b>Chair: Junko Yamashita (University of Bristol, UK)</b>		Room 1
	• Social Dialogue and Pension Reform in Taiwan, 2012-2017	Tsung-hsi Fu (National Taiwan University, Taiwan)	
	• Public Attitudes towards Social Security and Welfare: What Do the Chinese Think?	Alex Jingwei He (The Education University of Hong Kong, Hong Kong)	
	• New Social Citizenship, Social Equality, and the Reconstruction of Taiwan Pension Reform's Foundation	Chihlung Huang (I-Shou University, Taiwan)	

Paper Session 4: 9:00-10:30			
Session	Presentation		Venue
Session 4C	<b>Stream 8.1 Ageing and the Life Course</b> <b>Chair: Bo-Yung Kim (Yeungnam University, South Korea)</b>		Room 3
	• Demographic Ageing and Older People's Social Participation	Chikako Endo (Osaka University, Japan)	
	• Realizing the Idea of 'Active Ageing'?: An Empirical Study on the Community Caring Stations in Taiwan	Yuan-shie Hwang (National Chi-nan University, Taiwan) and Li-hsin Chuang (National Chi-nan University, Taiwan)	
	• Capabilities Development Among Elderly Chinese: A Comparative Study Between Two Different Hukous	Birgitte Egeskov Jensen (Aalborg University and Chinese Academy of Sciences, Denmark and China)	
	• Politics of Gender and Labor: Focusing on the Role of Korean Women's Movement for Gender Equality at Work	Mijin Kim (Economic Policy Institute for Quality of Life, Japan)	
Session 4D	<b>Stream 5.2 Health and Well-being</b> <b>Chair: Yuko Tamiya (Kobe Gakuin University, Japan)</b>		Room 4
	• Who Pays and Who Benefits?: Healthcare Conundrum in East Asia	Gyu-Jin Hwang (University of Sydney, Australia)	
	• Deprivation and Inequality in Urban Areas and Unmet Health Care Need: A Multilevel Analysis of Seoul Metropolitan City	Heeun Kim and Minah Kang (Ewha Womans University, South Korea)	
	• Health Expenditure and Health Outcome: Is China Catching Up with the OECD Countries?	Haoran Peng, Qianyun Zheng, Hanyang Wang (Sun Yat-sen University, China), and Minhui Xiao (Guangdong University of Finance and Economics, China)	
	• Social Health Insurance Agency and Cost Containment: The Politics of Third-Party Purchasing in China	Kai Liu (Renmin University of China, China)	

<b>Paper Session 4: 9:00-10:30</b>		
<b>Session</b>	<b>Presentation</b>	<b>Venue</b>
<b>Session 4E</b>	<b>Stream 7.2 Education</b> <b>Chair: Jack Chan (Sun Yat-sen University, China)</b>	
	<ul style="list-style-type: none"> <li>Youth Schooling as Social Inclusion in East Asian Countries: A Comparative Historical Analysis of the Formation of the Secondary Education System</li> </ul>	Shinichi Aizawa (Chukyo University, Japan)
	<ul style="list-style-type: none"> <li>The Impact of Parental Education and Income Levels on Social Mobility across Generations: By Using Korea Education and Employment Panel</li> </ul>	Yun Young Kim (In-Cheon Development Institute, South Korea)
	<ul style="list-style-type: none"> <li>Does Private Tutoring Widen Educational Inequality?</li> </ul>	Inhoe Ku (Seoul National University, South Korea), Jung-Eun Kim (Ministry of Health and Welfare, South Korea), and Hyerim Lee (Seoul Institute, South Korea)
	<ul style="list-style-type: none"> <li>'Massification' of Higher Education and Social Inequalities: A Study of the Expansion of Self-financing Sub-degree Education in Hong Kong</li> </ul>	Suk Ling Lo, Kam Wah Chan, Yip Wing Sze (The Caritas Institute of Higher Education, Hong Kong), Chi-yuen Leung (The Hong Kong Polytechnic University, Hong Kong), and Chan Wai Yin (Hong Kong Baptist University, Hong Kong)
		Room 5

**Day 2 (3 August 2017) Paper Session 5 (11:00-12:30)**

<b>Paper Session 5: 11:00-12:30</b>		
<b>Session</b>	<b>Presentation</b>	<b>Venue</b>
<b>Session 5A</b>	<b>Stream 1.3 Welfare States and Welfare Regimes</b> <b>Chair: Alex Jingwei He (The Education University of Hong Kong, Hong Kong)</b>	
	• Social Economy for Ageing Population	Lim Sang Hun (Kyung Hee University, South Korea)
	• New Policy Idea, Social Discourse and Unpopular Pension Reforms in Japan	Masato Shizume (Ritsumeikan University, Japan)
	• Towards New Social Agreements in the Trajectories of Welfare Regimes? The Cases of South Korea, Brazil and Mexico	Enrique Valencia-Lomelí (University of Guadalajara, Mexico)
	• Divergent Restructuring of the Old Age Pension System in Korea and China	Meixiang Xia (Seoul National University, South Korea)
<b>Session 5B</b>	<b>Stream 11.2 Social Protection</b> <b>Chair: Tsung-hsi Fu (National Taiwan University, Taiwan)</b>	
	• Agenda-setting Process of Universal Birth Registration (UBR) in South Korea	Minji Ju, Yeonsoo Kim and Minah Kang (Ewha Womans University, South Korea)
	• Analysis of the Factors Affecting the National Pension Payment of Young People	Eunji Kim (Ewha Womans University, South Korea)
	• How Sports Can Contribute to Compensate for Social Policies: From a Case of a Soccer-based Homeless Assistance Programme	Sayato Nakata (Hitotsubashi University (EY Advisory & Consulting Co.), Japan) and Naofumi Suzuki (Hitotsubashi University, Japan)
	• Universal Coverage: The (Im)Possible Dream?	Shin Yamada (Hiroshima Shudo University, Japan)

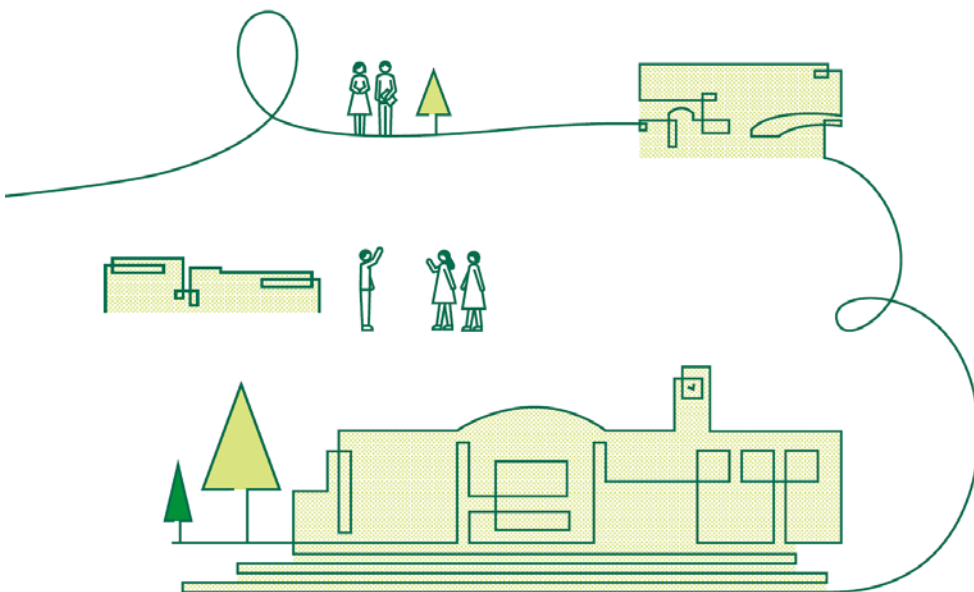
Paper Session 5: 11:00-12:30		
Session	Presentation	Venue
Session 5C	<b>Stream 8.2 Ageing and the Life Course</b> <b>Chair: Koichi Hiraoka (Ochanomizu University, Japan)</b>	
	• Successful Introduction of Welfare Technology in Elderly Care?: A Perspective on Governance	Nobu Ishiguro (Osaka University, Japan)
	• Elderly Concentration, Health, and Need of Social Care: New Findings from South China	Tracy Lu (The Chinese University of Hong Kong, Hong Kong) and Wei Liu (Nanhai Society for Social Work Scholars and Students, China)
	• Retiring in a Workfare State: Public Pensions, Activation, and Irregular Cash Transfers in Singapore	Kok-Hoe Ng (National University of Singapore, Singapore)
	• Intergenerational Support, Government Support and Depression among Elderly People in China	Nannan Zhang (The Chinese University of Hong Kong, Hong Kong)
Session 5D	<b>Stream 5.3 Health and Well-being</b> <b>Chair: Ijin Hong (Yonsei University, South Korea)</b>	
	• Labor Rights Deficits and Chinese Rural-to-urban Migrant Workers' Mental Health	Yujun Liu (The University of Hong Kong, Hong Kong)
	• Welfare State and Dying: A Case Study of Japan	Ryozo Matsuda (Ritsumeikan University, Japan)
	• The Effects of the Type of Employment Status (Regular/Non-regular) on Health of Youth in Korea: Focusing on the Mediating Effects of Daily Stress	Suk-Hyun Lee and Chang-Keun Han (Sungkyunkwan University, South Korea)
	• Balancing Work and Family and Wellbeing of MCWr.	Lih Rong Wang (National Taiwan University, Taiwan)



Paper Session 5: 11:00-12:30		
Session	Presentation	Venue
Session 5E	<b>Stream 7.3 Education</b> <b>Chair: Chien-Chung Huang (Rutgers University, USA)</b>	
	• Unequal at the College Door: Developing Career-related Cultural Capital among College Freshmen	Felicia F. Tian and Lin Chen (Fudan University, China)
	• I Turn U Turn: Understanding the Learning Environment and Educational Needs of Rural Toyota	Ji-Le Tolimao, Jing Zhang, Xinran Cai, Chawpaka Chaosarn and Anouchka Tuluka (Nagoya University, Japan)
	• Exploring the Mechanism for Din Tao to Provide Community Care for Dropout Students	Yi-Fen Tseng (National Pingtung University of Science and Technology, Taiwan)
Session 5F	<b>Stream 9.4 Labour Market and Inequality</b> <b>Chair: Stefan Kühner (Lingnan University, Hong Kong)</b>	
	• A Study on Youth Internship Experiences and Labour Market Outcomes of Young College Graduates	Migyounng Kim (Ewha Womans University, South Korea)
	• Low-Wage Employment Patterns in Taiwan	Pei-Yuen Tsai (National Chengchi University, Taiwan), Hung-Yang Lin (National Pingtung University of Science and Technology, Taiwan), and Yuen-Wen Ku (National Taiwan University, Taiwan)
	• Politics Against Market: The Practice of Decommodification on Hospital Without Social Classes Policy at Kulonprogo Regency, Indonesia.	Tauchid Komara Yuda, Irwan Harjanto and Pinto Buana Putra (Universitas Gadjah Mada, Indonesia)



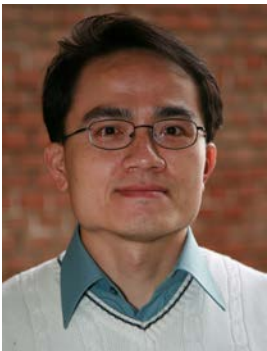
# Plenary Sessions



## Welfare Retrenchment in East Asia: Pension Reforms in Comparative Perspective

Shih-Jiun Shi (National Taiwan University, sjshi@ntu.edu.tw)

East Asian social policy scholarship has been focusing on the dynamics of welfare expansion, primarily driven by democratization that led the governments to establish new programmes or broaden the existing ones in response to the needs of marginalized social groups. However, arguments based on the facilitative role of democratization in welfare state developments of the 1990s gradually reach their limit in explaining the current state of EASP which is undergoing institutional changes. This presentation highlights the need to shift attention to the changing social politics in terms of (positive and negative) policy feedbacks generated by the given institutions. Pension reforms are taken as the prime example: We identify three institutional patterns of pension systems. First, the statist pension system assigns public pensions the main responsibility for old-age security, whereas private provision plays a relatively minor role. Second, the dualist pension system includes both public and private pensions with a parallel role in the provision of retirement income, though a clear gap in pension provision exists between workers of the core and marginal sectors. Finally, the individualist pension system is characterized by the presence of genuine fully-funded individual accounts with emphasis on the citizens' responsibilities for their own old-age security. Based on this heuristic typology, we analyze the data from the Comparative Study of Electoral Systems (2011-2016) in an attempt to recognize the specific policy feedbacks of the respective pension institutions in Hong Kong, Japan, South Korea, and Taiwan. Divides in attitudes towards pensions are identified among different groups alongside age, class, and economic sectors in the four cases, though with diverse constellations associated with the impacts of the existing institutional settings. These findings offer a preliminary template for understanding the changing dynamics of welfare retrenchment in East Asian social policy.



**Shih-Jiun Shi**

Professor, Graduate Institute of National Development, National Taiwan University, Taiwan

Shih-Jiun Shi is Professor of Social Policy in the Graduate Institute of National Development, National Taiwan University. He is a political sociologist whose fields of research include comparative social policy with particular regional focus on the Greater China regions (Mainland China, Hong Kong and Taiwan) and European welfare states. His recent projects concern the comparative study of pension reforms in East Asia, as well as the historical analysis of social policy ideas in China—both of which in collaboration with the international scholarship on East Asian social policy. A monograph outcome is expected after these research projects. He has been serving in the editorial boards of several international journals such as *Journal of Aging & Social Policy* and *Journal of the Korean Welfare State and Social Policy*. He has wide-range paper publications in domestic and international journals including the *Journal of Social Policy*, *Social Policy & Administration*, *Policy & Politics*, *International Journal of Social Welfare*, and *Public Management Review*.

## Changing Care Diamonds in Europe and Asia: Asianization of Europe and Europeanization of Asia?

Emiko Ochiai (Kyoto University, ochiai.emiko.3r@kyoto-u.ac.jp)

This paper is an outcome of a project on changing childcare and elderly care provision and finance in relation to the changing roles of family, state, market and community in European and Asian countries. Due to rapid changes on both sides, a new landscape is emerging. We are discussing welfare retrenchment and refamilialization in Europe and the development of welfare states in Asia. We are inclined to ask if Europe is becoming like Asia and if Asia is becoming like Europe. “Asianization” and “Europeanization” are defined firstly as the decrease and the increase in public social expenditure and, secondly, as the changing shape of the care diamond that consists of four sectors: state, market, family and association or community. To conclude, as far as childcare is concerned, the state sector has even expanded and mixed with other three sectors at least in some European countries, playing the roles of regulator and financier, while its role is still limited in Asia.



**Emiko Ochiai** Professor, Graduate School of Letters, Kyoto University, Japan

Emiko Ochiai is Professor of Sociology and the Director of the Asian Research Center for the Intimate and Public Spheres at Graduate School of Letters, Kyoto University. She is a family sociologist and family historian who is also active in the field of gender studies. She has contributed to comparative studies of Asian societies and reconstruction of social theories from an Asian perspective. Her recent research projects combine family sociology, welfare state theories and migration studies, and compare Asian and European cases to develop a framework to understand on-going transformations in private lives and public institutions all over the world. The outcomes of the projects are being published as a series *The Intimate and the Public in Asian and Global Perspectives* from Brill, of which she is the series editor. Her English publications include *Transformation of the Intimate and the Public in Asian Modernity* (co-editorship, Brill, 2014), *Asian Women and Intimate Work* (co-editorship, Brill, 2013, selected in Choice Outstanding Academic Titles 2014), *Asia's New Mothers* (co-editorship, Global Oriental, 2008) and *The Stem Family in Eurasian Perspective: Revisiting House Societies, 17th-20th Centuries* (co-editorship, Peter Lang, 2009).

## The Sustainable Development Goals and Children: How Well Do East Asian Social Policies Fare in Achieving Global Goals?

Sarah Cook (UNICEF Office of Research-Innocenti, [scook@unicef.org](mailto:scook@unicef.org))

This presentation will focus on the globally agreed Sustainable Development Goals and the role of social policies in achieving outcomes for children. Based on analysis of key indicators relevant to children across OECD countries, and comparable data on East Asian countries, I explore the potential challenges both in terms of policy and data gaps for making progress against global goals across this region, and examine the implications of different social policy regimes on observed outcomes.



**Sarah Cook** Director, UNICEF Office of Research-Innocenti

Sarah Cook is the Director of UNICEF's Office of Research-Innocenti in Florence, Italy. An economist and China specialist, her research has focused primarily on China's social and economic transformations, including work on labour and migration, poverty, inequality, social policy and gender. From 2009-2015 she was the Director, United Nations Research Institute for Social Development (UNRISD) in Geneva, where she led the Institute in developing its 2016-2020 strategy on 'Transformations to Equity and Sustainability'. Her engagement in China has spanned the period from the mid-1980s, including five years as the Ford Foundation's Programme Officer in Beijing (2000-2005) where she led the Foundation's initiatives on economics, governance and gender. From 1996-2009 she was a Fellow at the Institute of Development Studies, Sussex. Sarah received her PhD from the Kennedy School of Government, Harvard University, an M.Sc. from the London School of Economics and her BA from Oxford University.

## Possibility of Sustainable Welfare Societies: Integration of Social Policy and Environmental Policy in the Post-growth Society

Yoshinori Hiroi (Kyoto University, hiroi.yoshinori.5u@kyoto-u.ac.jp)

Welfare state models in the latter half of the 20th Century presupposed the continuous economic growth, and have been constructed on the assumption that economic growth and increasing income equality are mutually reinforcing. But currently, as most of the industrialized countries are experiencing chronic economic stagnations owing to the maturation of consumptions and more fundamentally, the finite nature of natural resources and environments in the global level are being recognized, welfare state models combined with the continuous economic growth are put into question.

In such a context emerges the concept of “sustainable welfare society,” which means that the concept and discourse of “sustainability” should be incorporated into the discussions and policy paradigms of social policy. This also means that the integrations of social policies which deal with distributional justice and environmental policies which deal with sustainability of human economic activities should be in some way or other designed and pursued.

The concept of sustainability has multiple dimensions and among them, 1) environmental sustainability under the conditions of finite natural resources, 2) financial or institutional sustainability of social protection systems, 3) demographic and inter-generational sustainability in the times of aging population and population decrease, 4) sustainability of work or employment in the age of innovation are included. And when we look at the present situation of Japan, whose current administration having the “growth-maniac” orientations, all of these dimensions of sustainability are placed in jeopardy.

Based upon such concerns and conceptual frameworks, and drawing on some international comparisons and historical evolutions of capitalism, I will explore the possibility of sustainable welfare societies as well as policies to be taken, and draw some implications for the East Asian societies.



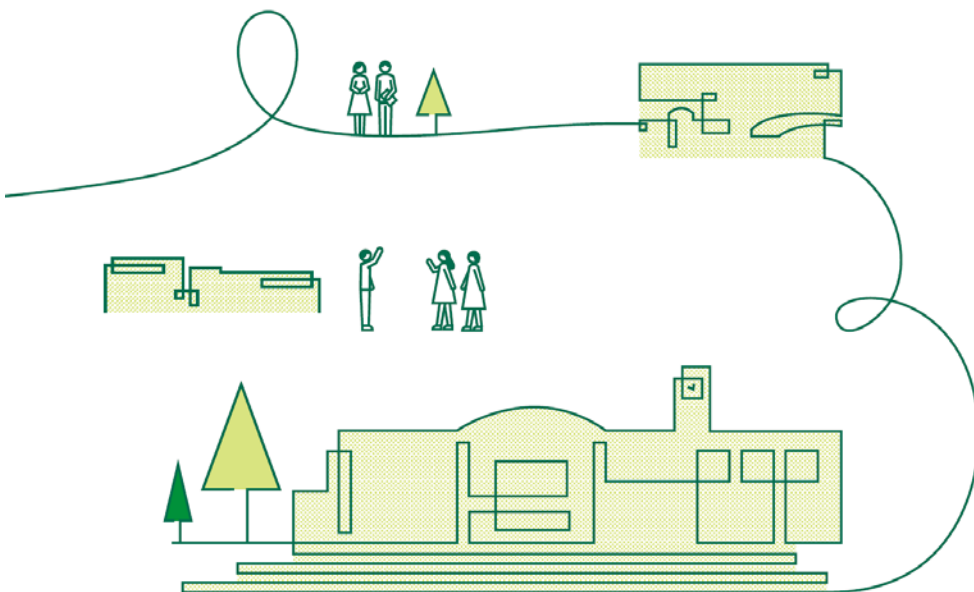
**Yoshinori Hiroi** Professor, Kokoro Research Center, Kyoto University, Japan

Yoshinori Hiroi, after earning B.A. and M.A. from University of Tokyo, worked for the Ministry of Health and Welfare between 1986 and 1996. He moved to Chiba University and became Professor at the Faculty of Law and Economics in 2003. He moved to the current position in 2016. He was a visiting scholar at the Department of Political Science of Massachusetts Institute of Technology between 2001 and 2002. Professor Hiroi has written many books in Japanese including *Social Security of Japan* (1999), *Steady-state Society* (2001), *Sustainable Welfare Society* (2006), *Rethinking on Community* (2009) and coauthored *Social Security in Asia* (2003). He received Japan Economist Award in 2000 and Osaragi Award in social sciences in 2010. His English publications include “Factors in health care spending: An eight nation comparison with OECD data” in *Containing Health Care Costs in Japan*, University of Michigan Press (1996) and “Visions of the Sustainable Welfare Society: Extending Social Quality into an Asian/Developmental Context,” *International Journal of Social Quality*, Vol.1, No.1 (2011). Professor Hiroi is a member of the committee on social protection of Japan International Cooperation Agency (JICA) since 2005.





# Practical Information



## How to Get to the Hotel and the Venue

*Centrair* (Chubu Centrair International Airport, NGO) to *Kanayama* by Meitetsu Line (30 minutes)

Timetables:

[http://www.meitetsu.co.jp/eng/timetable/centrair/timetable/access\\_e05\\_01.html](http://www.meitetsu.co.jp/eng/timetable/centrair/timetable/access_e05_01.html)

[http://www.meitetsu.co.jp/eng/timetable/centrair/timetable/access\\_e01\\_01.html](http://www.meitetsu.co.jp/eng/timetable/centrair/timetable/access_e01_01.html)

*Kanayama* to *Chikusa* by JR Chuo Line (5 minutes)

*Chikusa* station (Exit 3) to Hotel Leoplace Nagoya (5 minutes' walk)

*Kanayama* (M01) to *Nagoya Daigaku* (M18) by Subway (20 minutes)

*Chikusa* (H12) to *Nagoya Daigaku* (M18) by Subway (20 minutes, transfer at *Motoyama* [H16=M17])

*Nagoya Daigaku* (M18) station (Exit 2) to the venue (3 minutes' walk)

The venue (Toyoda Auditorium) is the symbol of Nagoya University (see the photo on the front page of this booklet). You cannot miss it from the Exit 2 of *Nagoya Daigaku* station.

Hotel Leoplace Nagoya:

address: 3-4-4 Uchiyama, Chikusa-ku, Nagoya, 464-0075, Japan

phone: 052-741-3335

email : nagoya\_hotel@leopalace21.com

Tourist Information:

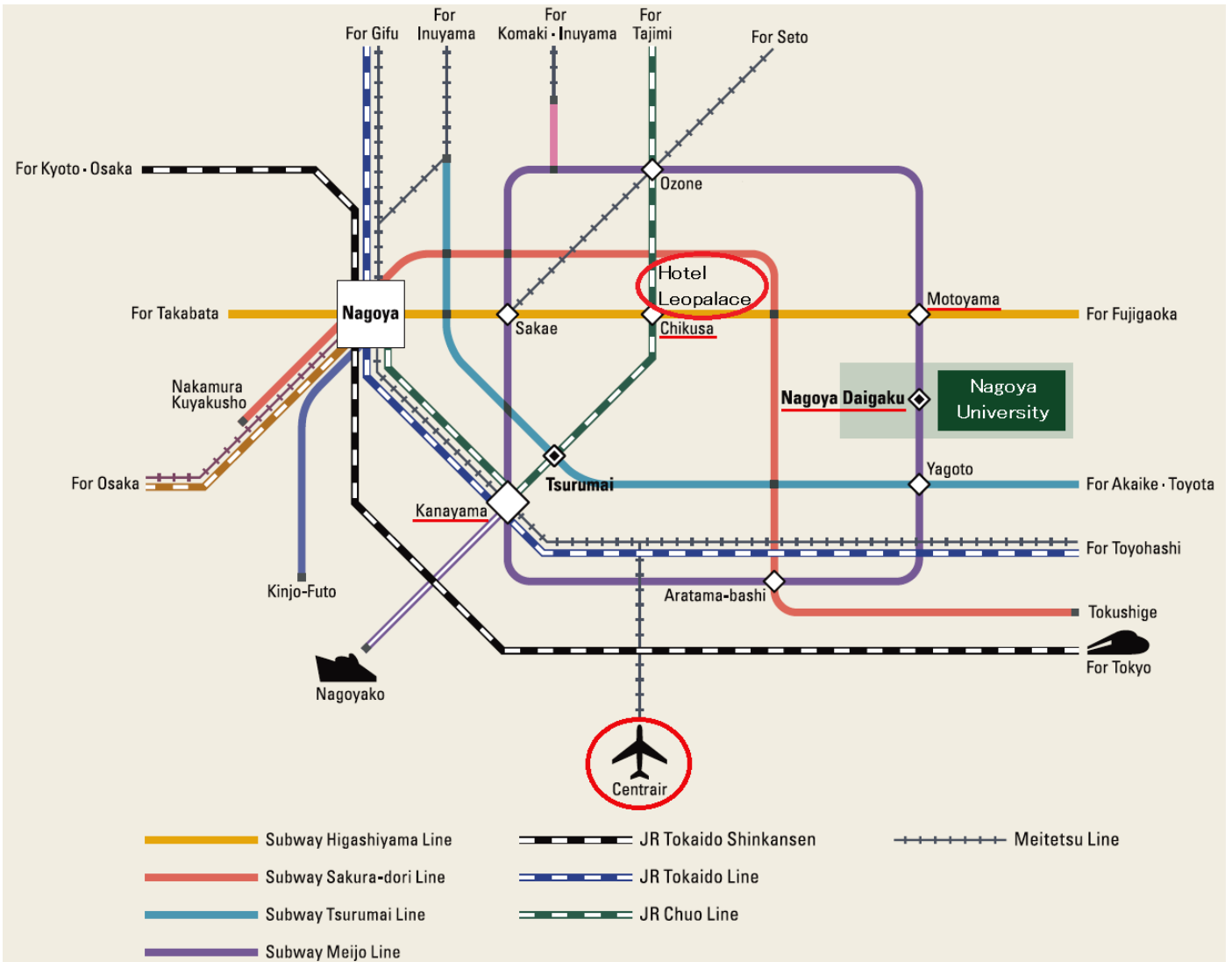
<http://www.centrair.jp/en/tourist-info>

<http://www.nagoya-info.jp/en>

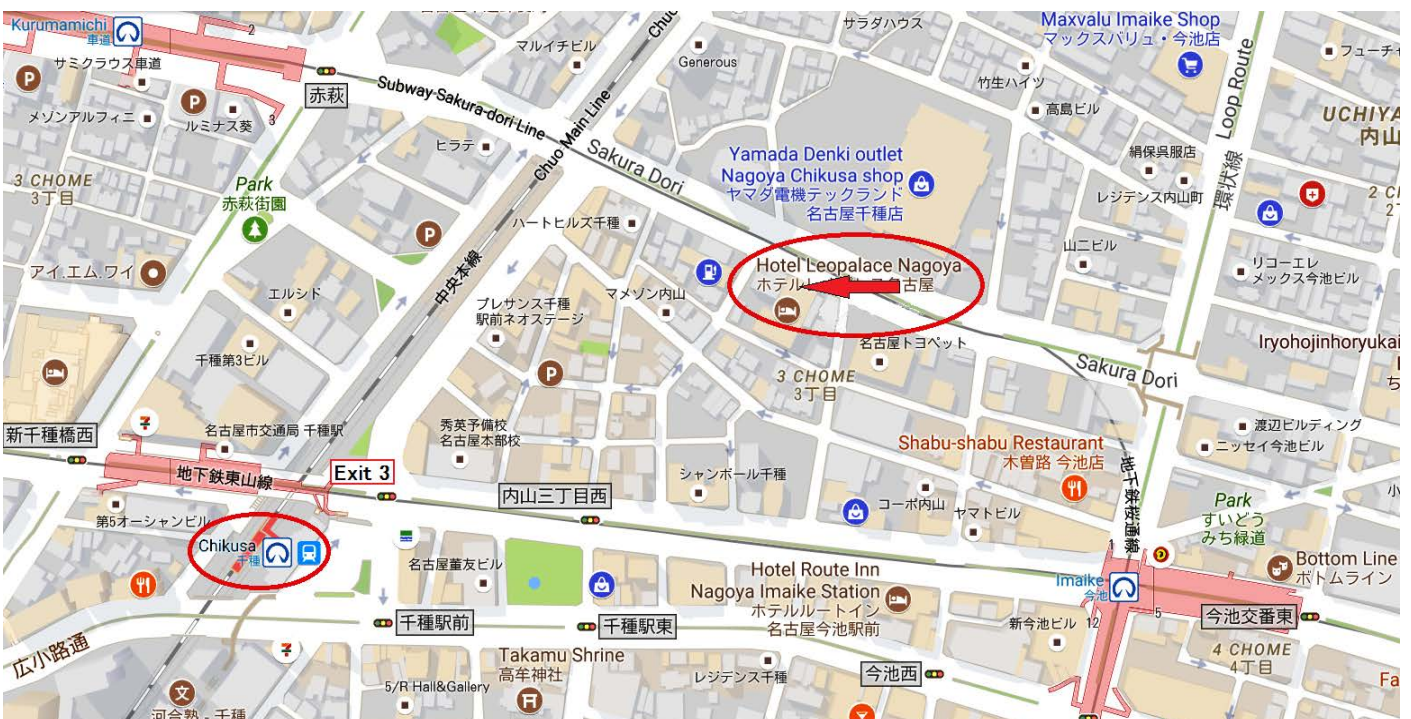
<http://www.tokugawa-art-museum.jp/english>

<http://www.tcmiit.org/english>

## Access Map from the Airport (Centrair) to the Hotel and the Venue



## Access Map from Chikusa Station to Hotel Leoplace Nagoya



## Campus Map with the List of Recommended Restaurants



A: *Universal Club* (breakfast, phone 052-782-6755, Opening hours: 8:30-10:30, for guests only, closed on weekend)

B: *Koranro* (casual Chinese restaurant, phone 052-837-0869, Opening hours: 11:30-14:00 and 17:30-23:00)

C: *The Cafe* (cafe bar, phone 052-836-0201, Opening hours: 11:00-24:00)

D: *Kochab French* (French bistro, phone 050-5593-5090, Opening hours: 11:00-15:00 and 17:30-23:00, closed on Tuesdays)

E: *Nomura* (Japanese cuisine, phone 050-5869-8042, Opening hours: 11:30-15:00 and 17:30-22:30, closed on Wednesday)

F: *Hamakin* (casual Japanese and Italian bar, phone 052-753-7776, Opening hours: 17:00-24:00)

G: *Uogokoro* (Japanese bar, phone 052-788-7780, Opening hours: 17:00-24:00)

H: *Ampiofiume* (Italian restaurant, phone 052-734-6063, Opening hours: 11:30-14:30 and 18:00-22:00, closed on Mondays)

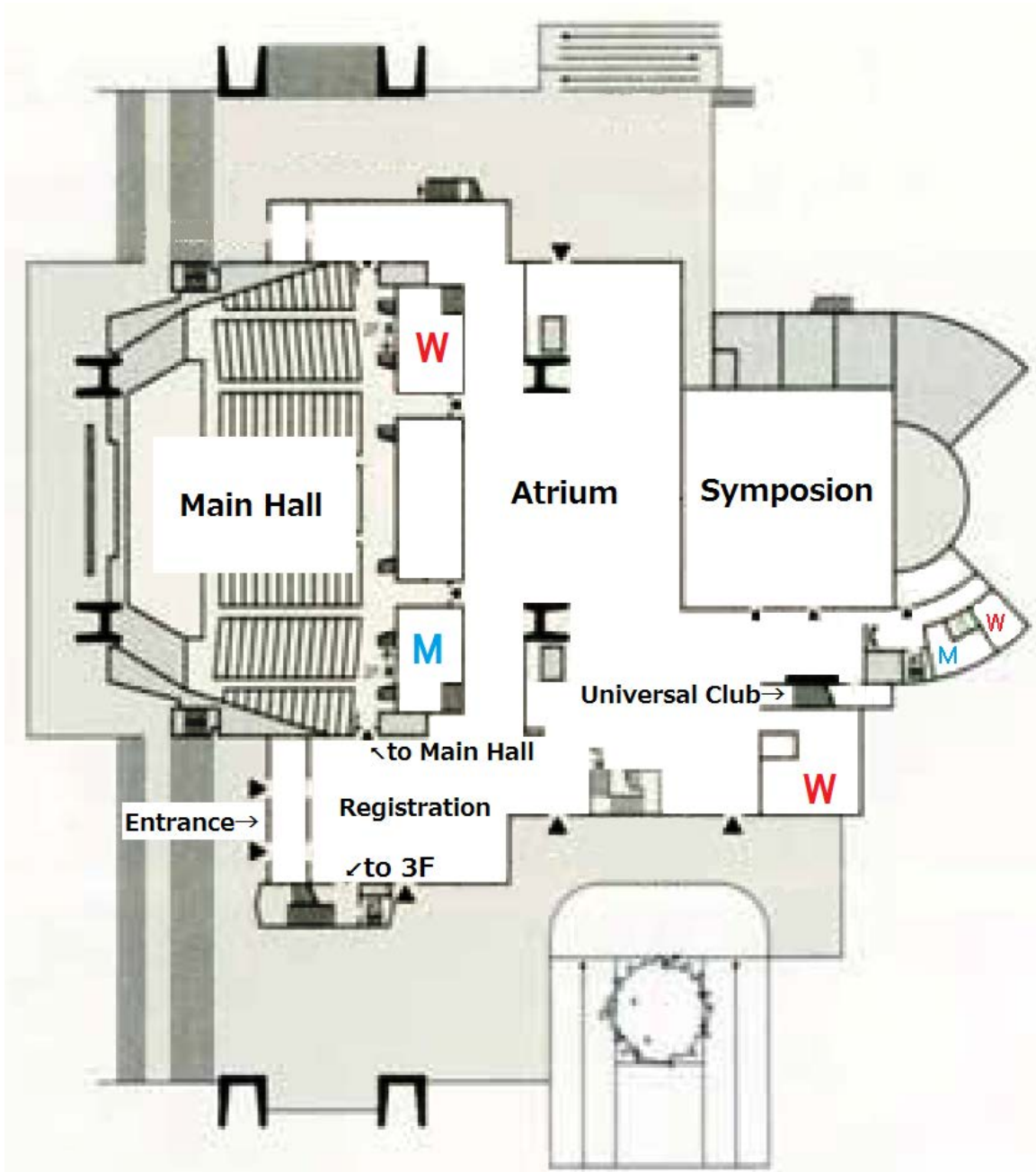
I: *Craigs Cafe* (cafe, phone 052-783-0013, Opening hours: 8:00-19:00, closed on weekend)

J: *Seattle Espresso Cafe* (cafe, phone 052-781-2123, Opening hours: 8:00-20:00, closed on weekend)

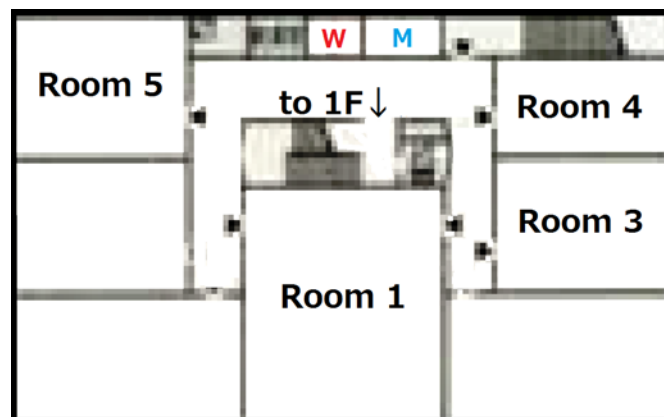
K: *Starbucks* (cafe, phone 052-788-2381, Opening hours: 8:30-21:00)

# Floor Map of Toyoda Auditorium

1F

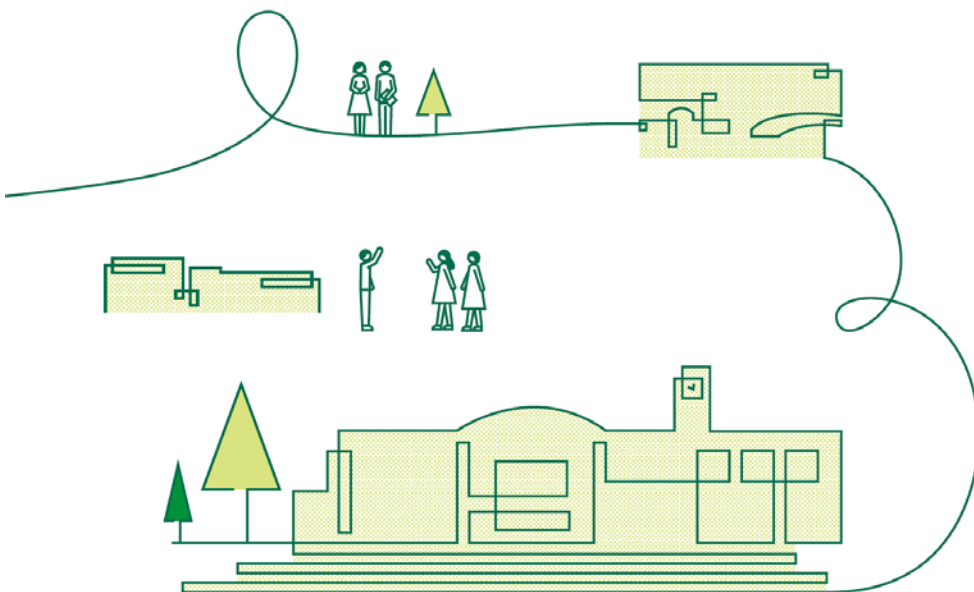


3F





# List of Participants



**EASIP** East Asian Social Policy



 **NAGOYA UNIVERSITY**